

# **Roundtable: Public Private Partnerships and Joint Technology Initiatives - Exploring the further development of multilateral cooperation initiatives – the Innovative Medicines Initiative**

RI-LINKS2UA Workshop

14. February 2017, Kiev

Jan Skriwanek

DLR-PT, National Contact Point Health



DLR Projektträger

# DLR's Project Management Agency

# We

- » drive research, innovation and education
- » support policies, programmes and projects
- » operate nationally, across Europe and internationally
- » network disciplines, industries and stakeholders
- » stand for dedication and professionalism

**CONSULTING**  
EVALUATIONS  
ANALYSES

TRAINING

INFORMATION,  
COMMUNICATION, DIALOGUES  
**FUNDING MANAGEMENT**  
RESEARCH AND INNOVATION  
MANAGEMENT



DLR-PT, Bonn



# Joint Technology Initiatives (JTIs)

- Joint Technology Initiatives (JTIs) are long-term **Public-Private Partnerships** and are managed within dedicated structures based on Article 187 TFEU (ex Article 171 TEC).
- JTIs support large-scale **multinational research activities** in areas of major interest to **European industrial competitiveness** and issues of high societal relevance.
- The first JTIs have been implemented since the beginning of FP7 (2007)
- JTIs organise their own **research agenda** and award funding for projects on the basis of open calls
- **The rules of participation** are aligned with Horizon 2020 but derogations exist for individual JTIs

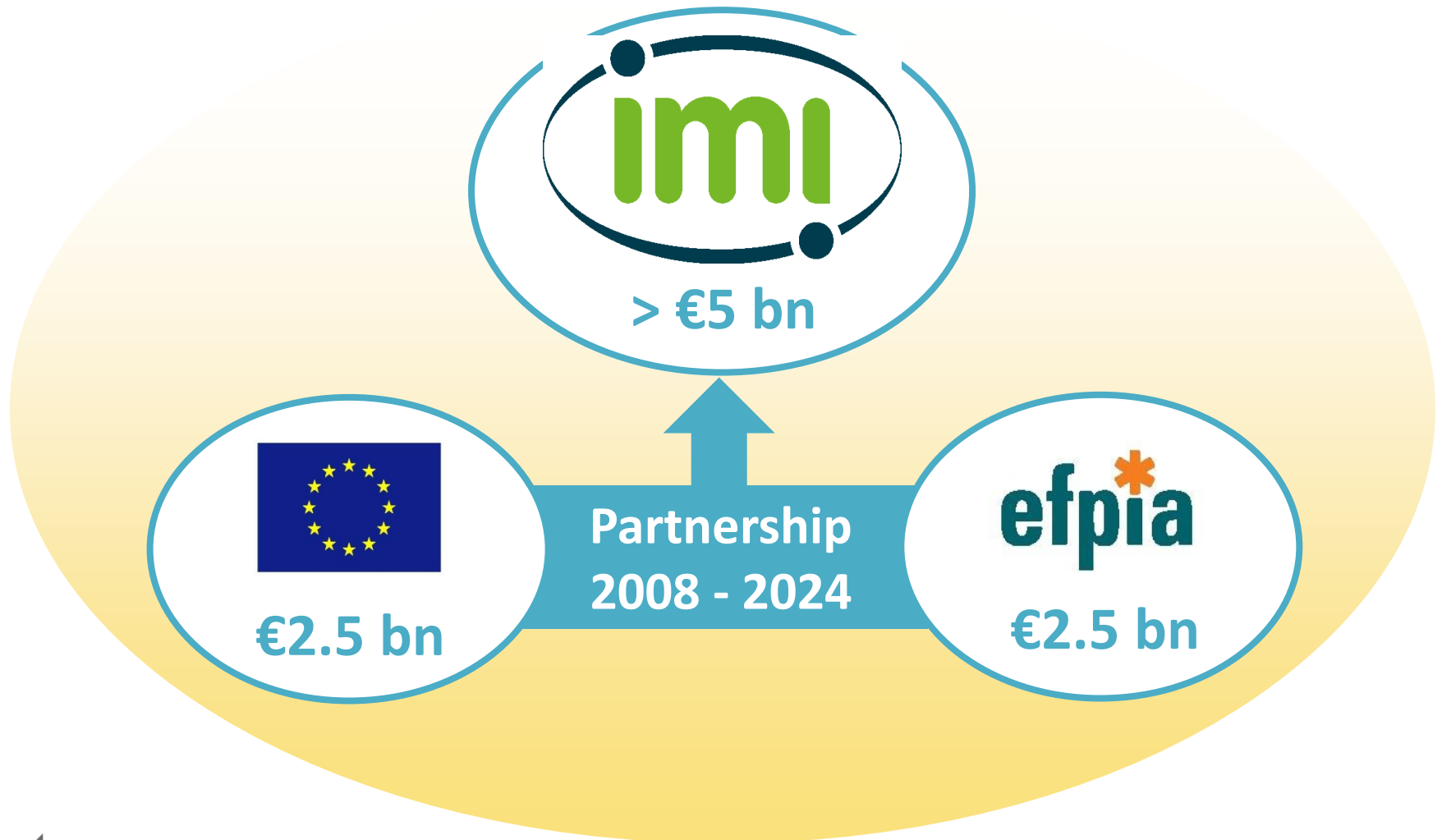


# JTIs in Horizon 2020

- **Innovative Medicines 2 (IMI2):** to develop next generation vaccines, medicines and treatments, such as new antibiotics
- **Fuel Cells and Hydrogen 2 (FCH2):** to accelerate market introduction of clean and efficient technologies in energy and transport
- **Clean Sky 2 (CS2):** to develop cleaner, quieter aircraft with significantly less CO2 emissions
- **Bio-based Industries (BBI):** to use renewable natural resources and innovative technologies for greener everyday products
- **Electronic Components and Systems for European Leadership (ECSEL):** to boost Europe's electronics manufacturing capabilities
- **Shift2Rail:** to develop better trains and railway infrastructure that will drastically reduce costs and improve capacity, reliability and punctuality
- **Single European Sky ATM Research (SESAR) 2020:** to develop the new generation of European Air Traffic Management system that will enhance the performance of air transport



# IMI – Europe's partnership for health



# IMI 2 budget (2014 – 2024)

**EU funding goes to:**

Universities

SMEs

Mid-sized companies

Patient groups

etc...



**€1.638 bn**



**€1.425 bn**

**EFPIA companies**

receive no funding

contribute to projects 'in kind'

**Other**

**€213 m**

**Associated Partners**

e.g. medical imaging companies

**IMI 2 total budget**

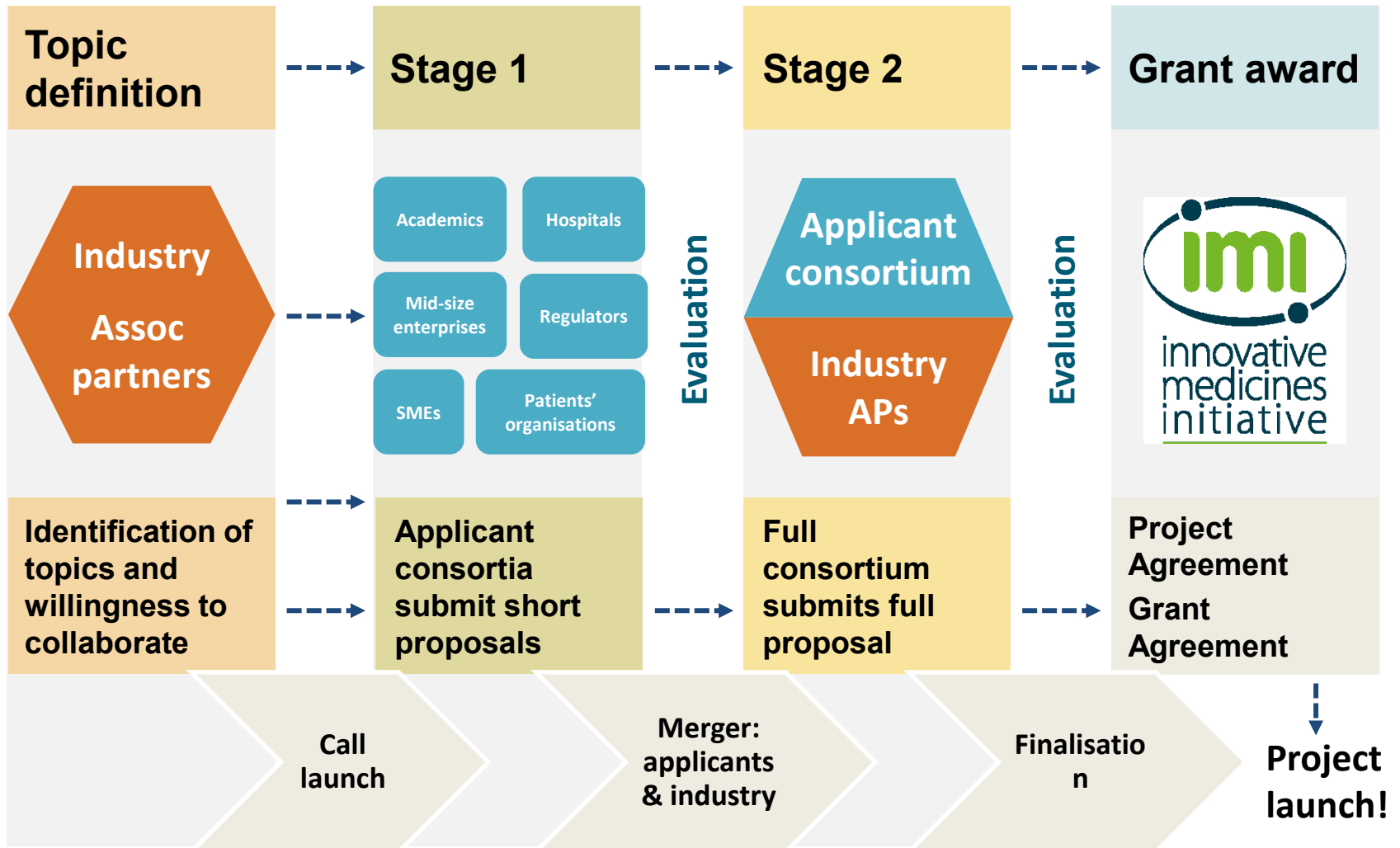
**€3.276 billion**



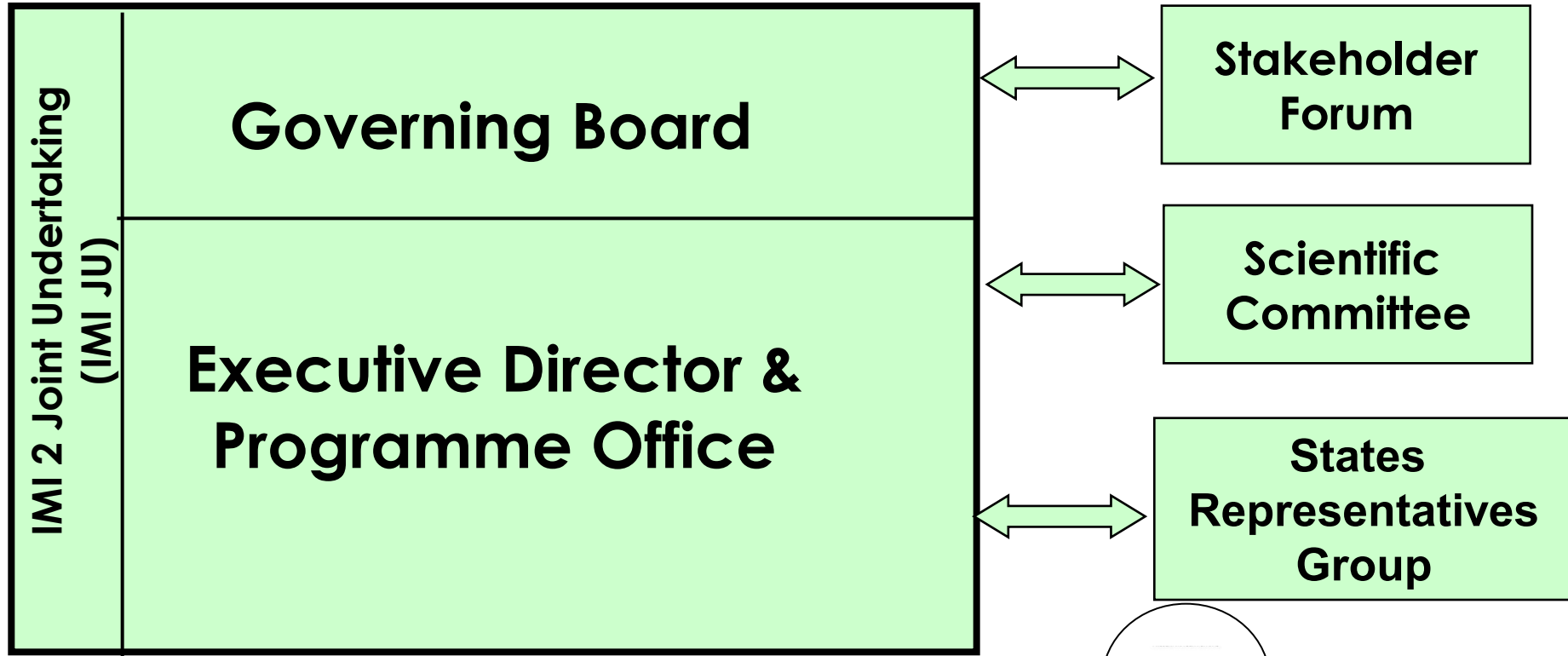
DLR Projektträger



# Typical IMI project life cycle



# IMI Governance



Get in touch with your local IMI2 contact point

<http://www.imi.europa.eu/content/states-representatives-groups>



DLR Projektträger





# The National Contact Point Health in Germany



# IMI - Services of the National Contact Point Health in Germany

- **Promotion of IMI2 Calls** within online information events (webinars) & regional information days
- Informing about IMI2 Calls/News by our **Newsletter**
- Information on IMI2 on our **website**
- Support **during proposal preparation**, „proposal check“
- Specific annual workshops on IMI IPR
- Implementation of a **specific support action on behalf of the German Ministry of Education and Research (BMBF)** for successful German IMI2 applicants entering the 2nd stage, providing support for
  - legal advice for negotiation of the Project and Grant Agreement
  - Travel costs
  - Workshops
- Administration of the **IMI2 Partnering Platform** containing more than 1000 profiles from all over Europe: <http://www.imi-partnering.eu> which is complementary to the **official IMI partnering tool**:  
<http://www.imi.europa.eu/content/partner-search>



# IMI - Experiences

- **Different sectors** with **different expectations and needs** have to work together in IMI: big pharma, SMEs, Academia, patients, regulators
- Topics are written by big pharma (EFPIA): **how to get involved into successful projects?**
- **Topics are very ambitious**, applicant consortia have to include different (european) expertises, not many institutions have the capacity to coordinate/initiate a consortium
- **Rules for participation differ from Horizon 2020** (IPR), more expertise in contract negotiation is needed compared to H2020
- **Strong interest from researchers and companies in Germany** – but reservation from different stakeholders concerning the participation in IMI projects in IMI1 (due to IPR and financing)
- New **support measurements** have been implemented to get the German research community successfully involved into IMI (e.g. webinars, partnering platform, IPR support)
- (New) contacts have to be established to the **IMI Programme Office in Brussels**



# IMI - Recommendations

- Get an overview about the **IMI funding opportunities** and the **peculiarities** of the initiative
- Contact your **national SRG delegate** and/or **Health NCPs**
- Attend the **IMI Openinfodays** and **IMI Stakeholderforums** in Brussels
- Attend **national info days** on IMI: <https://www.imi.europa.eu/events/2016/12/21/national-info-days-imi>
- Sign up for the **IMI Topicwebinars** whenever a call is going to be launched: <https://www.imi.europa.eu/content/events>
- **Become an evaluator**: Register in the expert data base of Horizon 2020: <https://ec.europa.eu/research/participants/portal/desktop/en/experts/index.html>
- Screen the **ongoing IMI projects**
- Make us of **trainings, webinars and brokerage events** (free of charge) of the **HNN 2.0 project** (Network of Health NCPs): <http://www.healthncp.net/health-ncp-net-hnn-20> and the **FitforHealth** project: <http://www.fitforhealth.eu/>



# How to get involved

- Visit the IMI website  
[www.imi.europa.eu](http://www.imi.europa.eu)
- Sign up to the IMI newsletter  
[bit.ly/IMInewsletter](http://bit.ly/IMInewsletter)
- Follow IMI on Twitter  
[@IMI\\_JU](https://twitter.com/IMI_JU)
- Join the IMI LinkedIn group  
[bit.ly/LinkedInIMI](http://bit.ly/LinkedInIMI)
- E-mail  
[infodesk@imi.europa.eu](mailto:infodesk@imi.europa.eu)





# How to get involved - ongoing projects

[www.imi.europa.eu/content/ongoing-projects](http://www.imi.europa.eu/content/ongoing-projects)



ORBITO



DLR Projektträger



EUROPEAN  
LEAD FACTORY

COMBACTE TRANSLOCATION



# Thank you for your attention!

**Jan Skriwanek**  
**National Contact Point Health**  
**DLR Project Management Agency .**

Heinrich-Konen-Str. 5  
53227 Bonn

phone +49 (0)228 3821 1677

fax +49 (0)228 3821 1699

e-mail [jan.skriwanek@dlr.de](mailto:jan.skriwanek@dlr.de)

[www.nks-lebenswissenschaften.de](http://www.nks-lebenswissenschaften.de)

